



Bergisches Land: The Highlands East of Cologne

Join us for the 8th **International Student Summer Camp**
of the Rotary Club Wipperfürth-Lindlar/Romerike Berge,
Rotary District 1810!

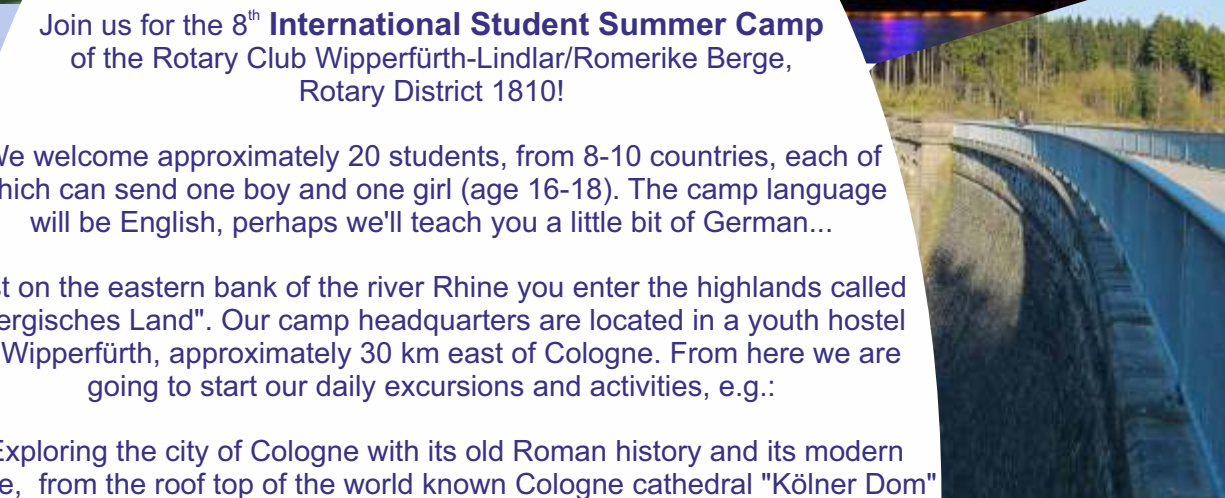
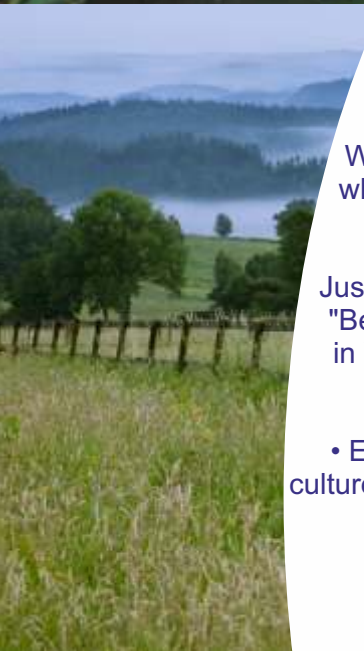
We welcome approximately 20 students, from 8-10 countries, each of which can send one boy and one girl (age 16-18). The camp language will be English, perhaps we'll teach you a little bit of German...

Just on the eastern bank of the river Rhine you enter the highlands called "Bergisches Land". Our camp headquarters are located in a youth hostel in Wipperfürth, approximately 30 km east of Cologne. From here we are going to start our daily excursions and activities, e.g.:

- Exploring the city of Cologne with its old Roman history and its modern culture, from the roof top of the world known Cologne cathedral "Kölner Dom" down to the lovely old city centre on the banks of the river Rhine
 - Trip on the unique Wuppertal suspension railway
 - Visit to the world famous knife production town of "Solingen"
 - Exploring a stalactite cave
 - Canoeing on the river "Agger"
- Special tour through the North Rhine-Westphalia governmental buildings
 - Discovering the medieval castle "Schloss Burg", the former home of the aristocratic and ruling family of the Counts of Berg
 - Excursion to a big dam with artificial lake
 - Visit to a still operational historic water powered steel forging mill ...
... and many other sights and attractions ...

The summer camp aims at developing and improving international friendships and networking among young people. We will be glad to welcome you in our summer camp and let you explore a region in the heart of Germany with the most interesting contrasts between the world famous city of Cologne and the beauty of the countryside, and its unique side by side of traditional farming, forestry and industrial culture!

And we're going to have a lot of fun !!





Bergisches Land: The Highlands East of Cologne 8th International Student Summer Camp

Facts and Figures

- **Arrival** on Friday, August 9th 2019,
at Cologne/Bonn (CGN)* airport or Cologne railway station*
- **Departure** on Monday, August 19th 2019,
from Cologne/Bonn (CGN)* airport or Cologne railway station*
- Daily excursion programme from 9.00 a.m. to 5.00 p.m.
- Casual summer wear, weather-proof jacket, sport & hiking shoes required
- Youth hostel accommodation, 2-4 persons per bedroom
 - Camp participants should be 16-18 years old;
- participants should neither be brother & sister nor boyfriend & girlfriend
- The non-refundable registration fee of € 350,00 p.p. includes insurance, accommodation and meals.

Important:

- Participants must have a health insurance & passport
- Personal liability & accident insurance are covered by the camp
- **Registration fee of € 350,-** incl. insurance must be paid until April 30th, 2019 by bank transfer with reference to **"Summer Camp 2019"** to the account of Mrs. Liebig-Preuten, treasurer of RC Wipperfürth-Lindlar/Romerike Berge Kreissparkasse Köln
IBAN: DE87370502990321559764 SWIFT/BIC: COKSDE33
- **Application:** To apply for this camp, contact the **Camps Coordinator: Alistair Knox**
email: camps@youthexchange.org.uk

*